

CMB

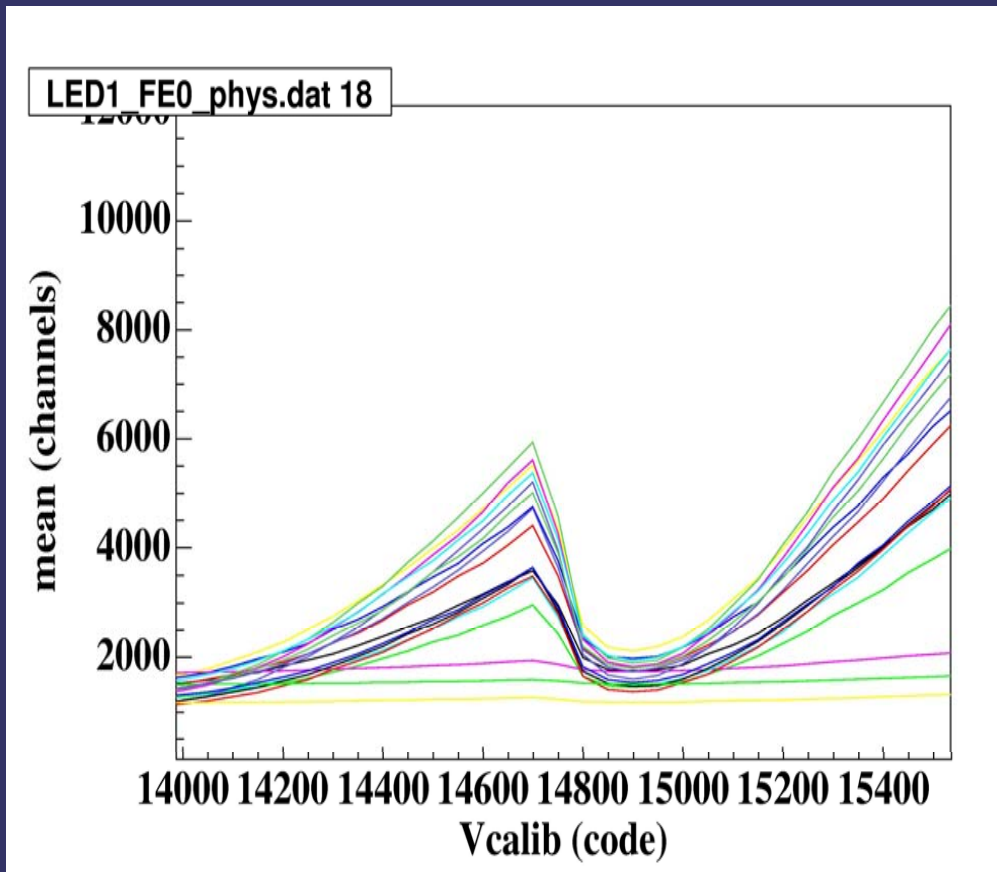
LED driver, CMB prototype

Ivo Polak

SEP 05

LEDdrv amplitude control problem

- Some bump occurred
- Strange non-documented behaviour of LEDdrv IC
- Factory contacted, now we have the hint
- Will be modified here and tested
- More topics will be discussed with producer IXYSRF



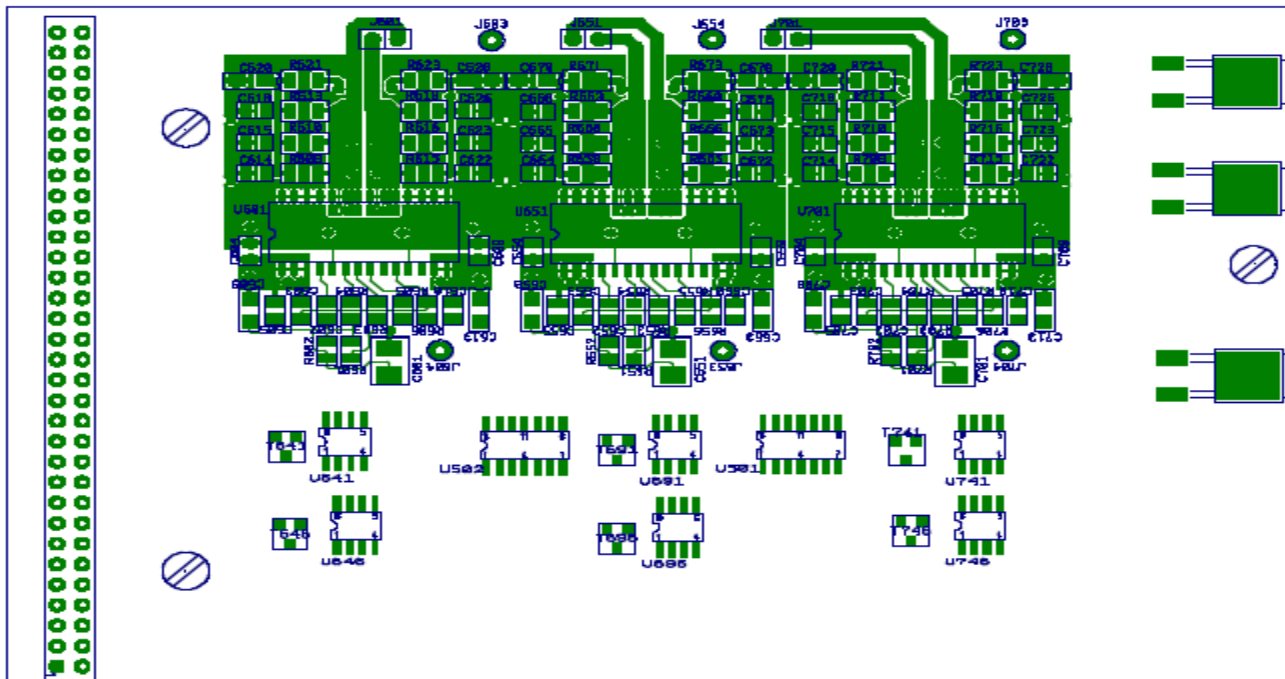
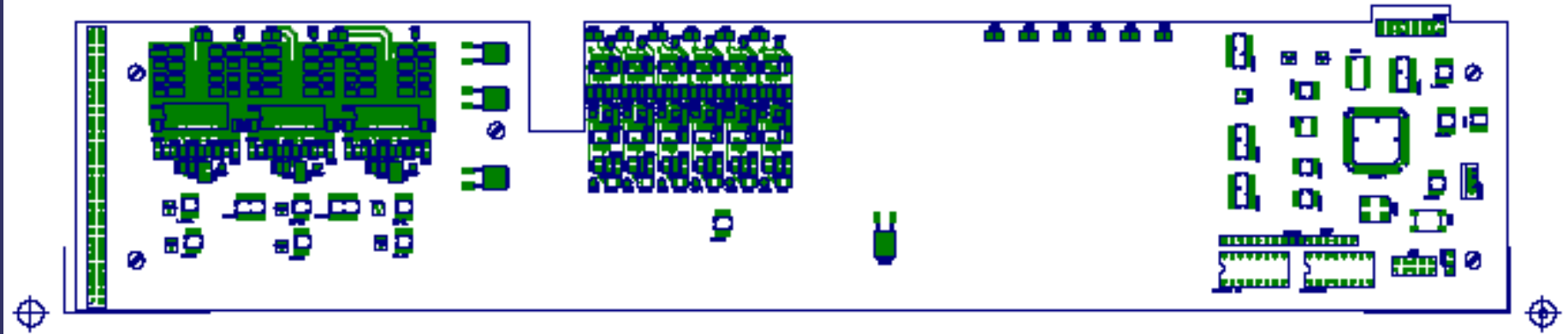
CMB-L TOP layer

3 LEDdrv

6 PINpreamps

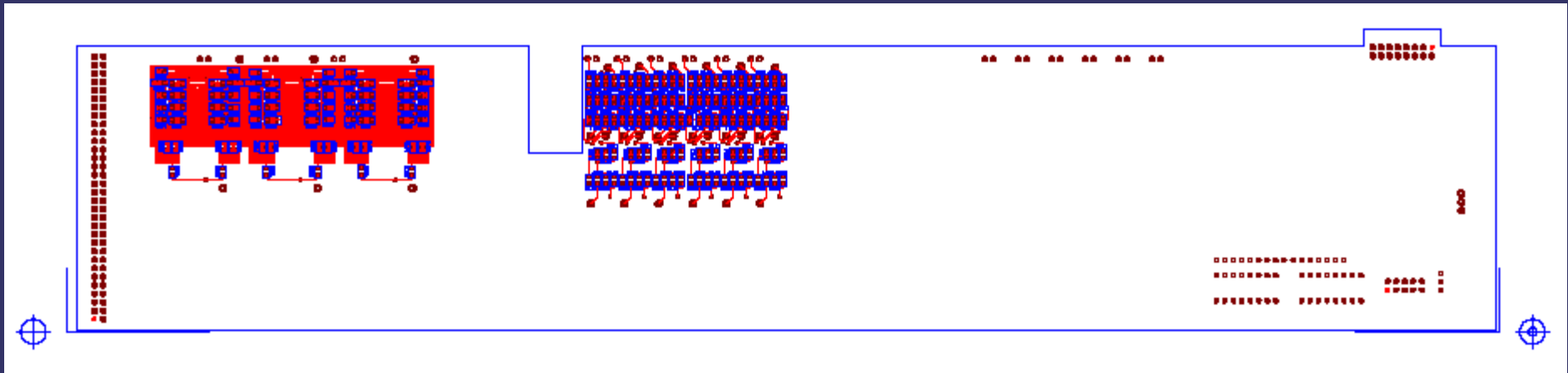
6 PINpreamps

Temp readout,
CPU, CANbus

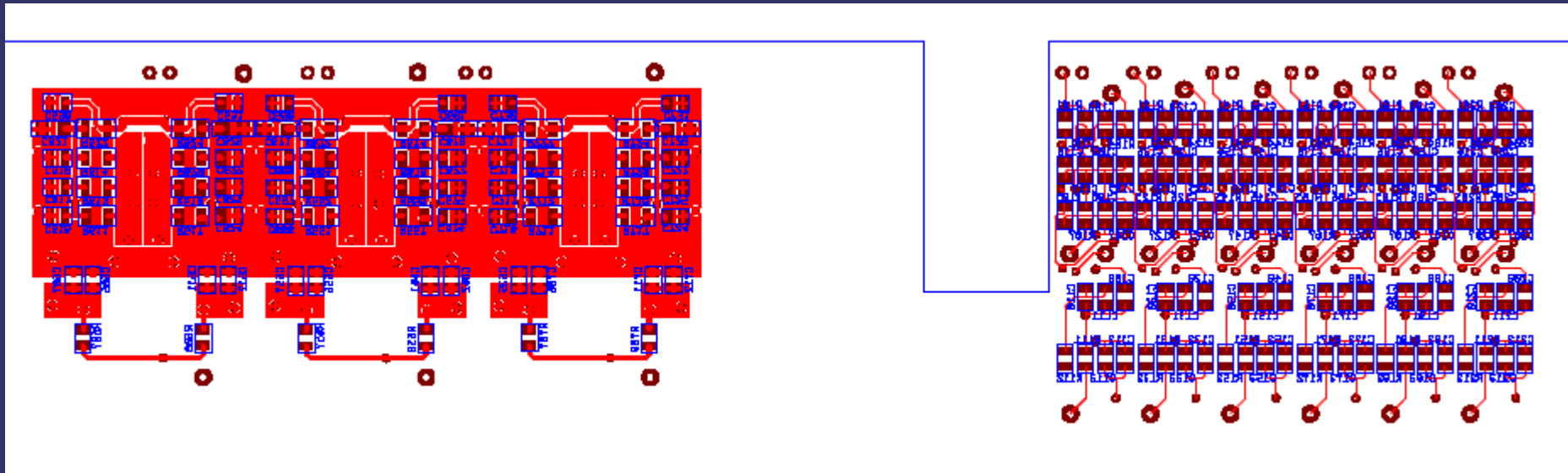


Zoom
of LEDdrv motive

CMB-L Bottom layer



Zoom 3 LED, 6PINpreamps



Time plan

- Two parts of CMB
- Design of Lower part with CANbus is to be finished at mid of october, then upper part with majority of LED drivers will be designed
- With an optimistic estimation, prototype Ready to use in the end of november
- LED Q test to be continued in october/november